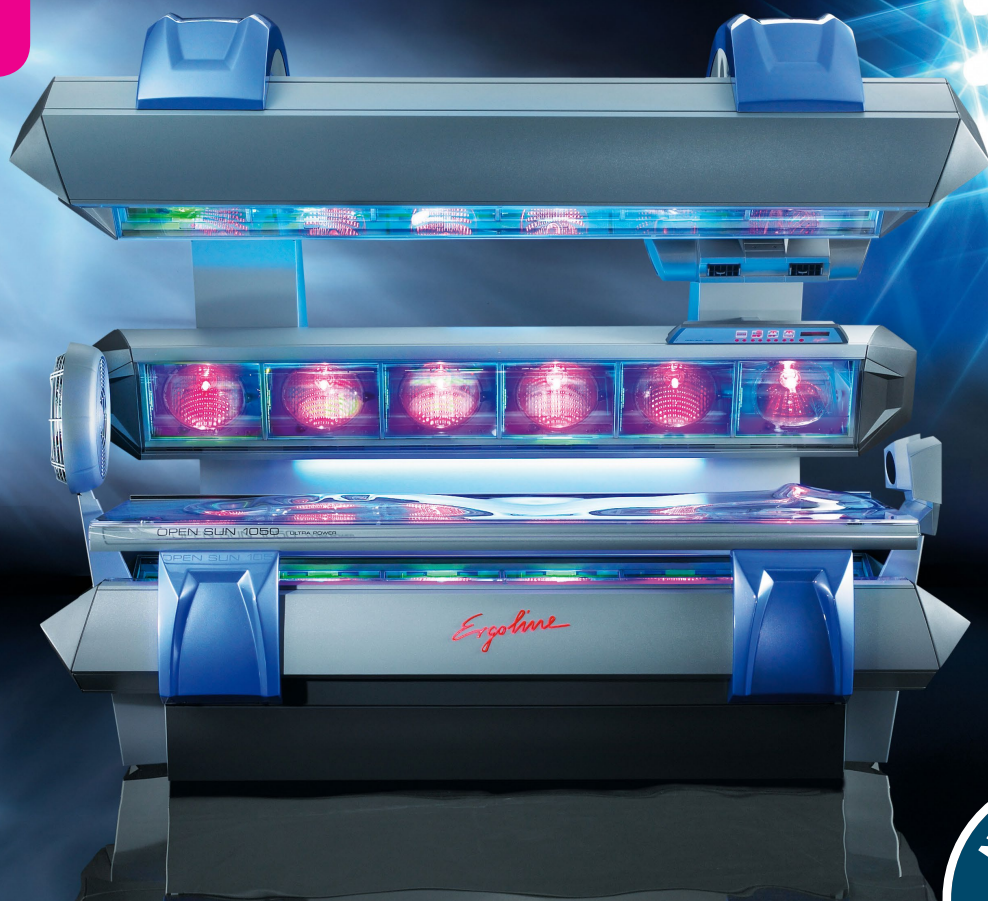


**ERGOLINE
OPEN SUN 1050**

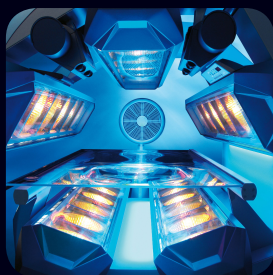
**ULTRA
PERFORMANCE**



ERGOLINE OPEN SUN 1050 ULTRA PERFORMANCE

FREE THE POWER

- 30 HIGH-PRESSURE UNITS PERFECTLY ALIGNED ALONG THE CANOPY AND BASE
- SUPERIOR ULTRA PERFORMANCE REFLECTOR TECHNOLOGY AND FILTER GLASS EXPERTISE
- PREMIUM COMFORT FEATURES, BOLD DESIGN AND GORGEOUS AMBIENT LIGHTING

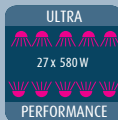


Ergoline

HIGHLIGHTS

OPEN SUN 1050 ULTRA PERFORMANCE

ALL FEATURES ARE INCLUDED



Ultra Performance technology: With its superior glass reflector technology and filterglass expertise, Ergoline demonstrates how powerful, yet at the same time comfortable, high-pressure tanning can be.



The most powerful Ultra Performance technology facial tanners yet are featured in the Open Sun 1050.



The ambient and interior light emphasizes the features in the tanning tunnel. The beautifully illuminated tanning tunnel appears particularly hygienic and invites your customers to tan.



Fan Cooling PLUS wraps your body and face in a pleasant flow of cooling air. The open design of the unit further ensures a cool and refreshing tanning experience.



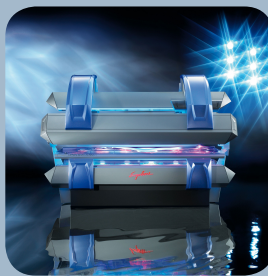
Our ergonomically designed base acrylic with an integrated head cushion, comfortable arm and footrests will give you comfort second to none during your tanning session.



Our 3D Sound System will bathe you in a sumptuous sea of sound as you tan. The system consists of two speakers, a subwoofer, and an SD card slot and MP3 connection.



With this function you can connect a MP3 player or a smartphone to enjoy your own music during the session. The Auto Play function will recognize the connection automatically.



ERGOLINE OPEN SUN 1050

ULTRA PERFORMANCE

Lamps	Watts max.	FT	Watts max.
27	580	3	640

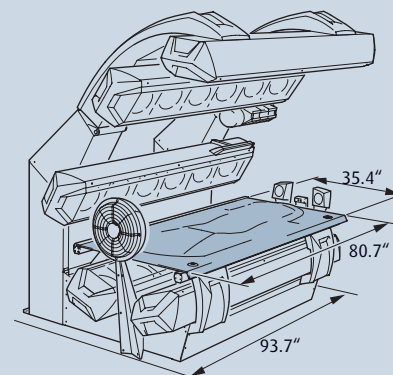
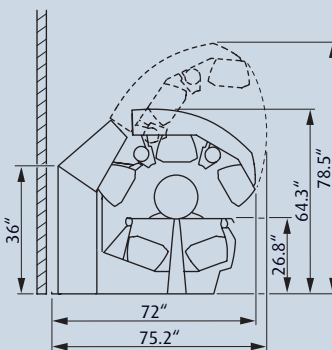
Maximum exposure time: 12 min

Standard Features: Ultra Performance for face and body area, Interior Light, Multi Relax, Fan Cooling Plus, 3D-Sound-Unit*

* 3D-Sound unit includes Voice Guide, MP3- & iPod-Plug-in, SD-Card-Slot Automatic Volume and Auto Play.

TECHNICAL SPECS, DIMENSIONS AND DATA

- Standard exhaust plenum
- Total power consumption (in watts): 21,500
- Electrical requirements: 230V 3Ø or 230V 1Ø
- Circuit breaker recommended:
- 70A / 3-pole 3Ø or 130A / 2-pole 1Ø
- Number of wires required: 4 3Ø or 3 1Ø
- Recommended room size (in feet): 10 x 9



Contraindication: This product is contra indicated for use on persons under the age of 18 years.

Contraindication: This product must not be used if skin lesions or open wounds are present.

Warning: This product should not be used on individuals who have had skin cancer or have a family history of skin cancer.

Warning: Persons repeatedly exposed to UV radiation should be regularly evaluated for skin cancer.

Notice: Read the mandatory FDA warning label found on every tanning machine for important information on potential eye injury, skin cancer, skin aging and photosensitive reaction and proper use. Compliant protective eyewear must be worn when using any indoor tanning system or device.

© 2014 JK Products & Services, Inc. reserves the right to change product designs, features, specifications, etc. without notice.

SUN ERGOLINE, A DIVISION OF JK PRODUCTS & SERVICES, INC.

1 Walter Kratz Drive · Jonesboro, AR 72401

870.935.1130 @ ergoline@sunergoline.com www www.sunergoline.com

f www.facebook.com/ErgolineWorld @JKNorthAmerica

Ergoline