

*MegaSun*



# ULTRA 35/4

OPERATING INSTRUCTIONS  
and

OWNER'S MANUAL

2647 Locust · St. Louis, MO 63103 · 314-652-7432 · FAX: 314-652-8634

This sunlamp unit is designed for one person and only one set of protective eyewear has been provided. The protective eyewear provided should be worn at all times when this unit is energized.

The unit is equipped with a dial electric timer which is to be preset to the actual tanning time and to energize the sunbed. The timer will automatically de-energize the sunbed when the preset time expires. You may over-ride the timer at any point to de-energize the unit by simply turning the timer knob counter clockwise to the "Off" mark.

To operate the unit, turn the knob clockwise to the desired time up to the maximum of 15 minutes. The "On-Off" rocker switch must be in the "On" position for the unit to energize. See the following exposure schedule and skin type descriptions to determine correct time setting. After timer is set, lie on the acrylic surface and lower the top section. The top is internally regulated to stop at 12 inches. This is the correct exposure position.

Recommended Exposure Schedule					
	Week 1	Week 2	Week 3	Week 4	Weekly
Skin Type	1st-3rd Treatments	4th-6th Treatments	7th-10th Treatments	11th-15th Treatments	Subsequent Treatments
II - Fair	3 Min.	7 Min.	10 Min.	12 Min.	15 Min.
III - Average	3 Min.	7 Min.	10 Min.	12 Min.	15 Min.
IV - Brown	3 Min.	8 Min.	12 Min.	15 Min.	15 Min.
V - Dark Brown	3 Min.	8 Min.	12 Min.	15 Min.	15 Min.

First week's sessions to be at evenly spaced intervals. Tan maintenance: 1-2 times weekly at Week 4 maximum exposure time. Maximum exposure time: 15 minutes.

In most cases, slight tanning will appear within six hours of the first application, provided your skin is capable of developing a tan.

A moisturizer may be used after each tanning session.

Skin Type II This is the individual that usually burns easily and severely. Tans minimally or lightly and peels.

Skin Type III Often referred to as "average" complexion, burns moderately and tans about average.

Skin Type IV This individual burns minimally, tans easily and above average.

Skin Type V This individual's system rarely burns, tans easily and substantially.

To obtain repairs or replacement components and accessories which are compatible with this product, including compatible protective eyewear, ultraviolet lamps, timers, reflectors, and filters, which will, if installed or used as instructed, result in continued compliance with the standard, contact:

MegaSun, Inc. 2647 Locust Street St. Louis, MO 63103 USA  
 Phone: 314-652-7432 Facsimile: 314-652-8634

**WARNING:** Ultraviolet radiation follows instructions. Avoid overexposure. As with natural sunlight, overexposure can cause eye and skin injury and allergic reactions. Repeated exposure may cause premature aging of the skin and skin cancer.

**WEAR PROTECTIVE EYEWEAR. FAILURE TO MAY RESULT IN SEVERE BURNS OR LONG-TERM INJURY TO THE EYES.**

Medications or cosmetics may increase your sensitivity to the ultraviolet radiation. Consult physician before using sunlamp if you are using medications or have a history of skin problems or believe yourself especially sensitive to sunlight. If you do not tan in the sun, you are unlikely to tan from the use of this product.

**This device is intended to be used by one person at a time!**

The recommended exposure position is a minimum of 1/2 inch (13 mm) from the lamps in the base and 3 inches (76 mm) below the lamps in the top section. Lie on the sunlamp bed and lower the top section down to its internally regulated stop point to attain this position. Any other position may result in overexposure.

This product is in conformity with performance standards for sunlamp products under 21 CFR 1040.20

For Replacement Lamps or Parts, contact: MegaSun, Inc. 2647 Locust St. St. Louis, MO 63103 USA Phone: 314/652-7432 Facsimile: 314/652-8634

**RECOMMENDED EXPOSURE SCHEDULE:**

Skin Type	Week 1, 1st-4th Sessions	Week 2, 4th-6th Sessions	Week 3, 7th-10th Sessions	Week 4, 11th-15th Sessions	Weekly Sessions, Maintenance
I Fair	5 MIN.	10 MIN.	15 MIN.	18 MIN.	20 MIN.
III Medium	5 MIN.	10 MIN.	15 MIN.	18 MIN.	20 MIN.
IV Dark	5 MIN.	12 MIN.	16 MIN.	20 MIN.	20 MIN.
V Very Dark	5 MIN.	12 MIN.	16 MIN.	20 MIN.	20 MIN.

First week's sessions to be at evenly spaced intervals, tan maintenance: 1-2 times weekly at Week 4 maximum exposure time.

**MAXIMUM EXPOSURE TIME: 20 MINUTES**

In most cases, slight tanning, with appear within six hours of the first application, provided your skin is capable of developing a tan.

A bronzer may be used after each tanning session.

**Skin Type II:** This is the individual that usually burns easily and severely. Tans minimally or lightly and peels.

**Skin Type III:** Often referred to as "average" complexion, burns moderately and tans about average.

**Skin Type IV:** This individual burns minimally, tans easily and above average.

**Skin Type V:** This individual's system rarely burns, tans easily and substantially.

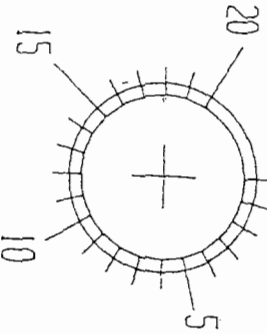
The device is intended to be used with the following lamp: **MegaSun F7TT12/BP/6.5**

**Attachment 2.5 (a)(b)**

Manufactured and Certified in conformance with 21CFR § 1040.20.	
by: <b>MegaSun, Inc.</b> 2647 Locust St. St. Louis, MO 63103	
1-800-229-7432	
Mfg Date	February 6, 1997
Model	MegaSun SL/M6 5/16 5/3/20
Serial Number	MS 123456
Amperage	30 amp
Voltage	220 v
Warning	Disconnected Power Before Servicing 7 3

20 minute timer

Off 1



MAXIMUM TIME 20 MINUTES

Additional Specifications:	
Length	79.25"
Width	37"
Height	20.5" bed
Weight	457 lbs.

Welcome to the *MegaSun* Family of  
Professional Tanning Experts.  
This *MegaSun* Tanning Bed was built especially for you.  
Thank You For Making  
The Intelligent Decision To Buy Quality!

### Assembly Instructions

These instructions were written with you in mind to help you get your MegaSun tanning unit up and operating as soon as possible. Please read these instructions carefully so you a full understanding of the proper installation methods and voltage requirements.

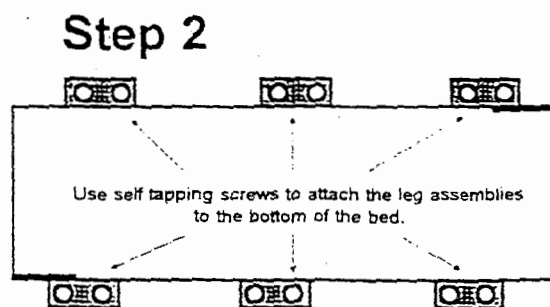
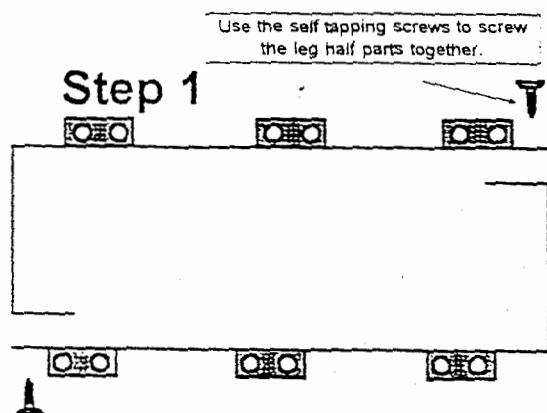
#### 1. Unpacking the Tanning Unit

Remove all packing material and save it should you have any damage claim with the trucking company. Remove the Tanning Unit and inspect for damage. If the unit is damaged call the factory at 314-652-7432. If possible perform this inspection while the truck driver is present.

Carry the bottom part of the bed into the tanning room. Place it on towels or clean corrugated on the floor with the acrylic toward the floor. Have the pivot hinge location side of the bed furthest from the wall so that when the bed is turned over the pivot hinge side is near the wall.

#### 2. Leg Stand Assembly and Installation.

Fit the "L" shaped leg half pieces together and assemble with self tapping machine screws (supplied). Attach the assembled leg stands to the bottom of the bed using additional self tapping machine screws. See Illustration Below.



3. Check that all screws are tight and carefully turn the bed over so the acrylic is up and the pivot hinge plate positions at either end of the bed are closest to the wall of the tanning room.

## Assembly Instructions (continued)

### 4. Attachment of Pivot Hinge Plates.

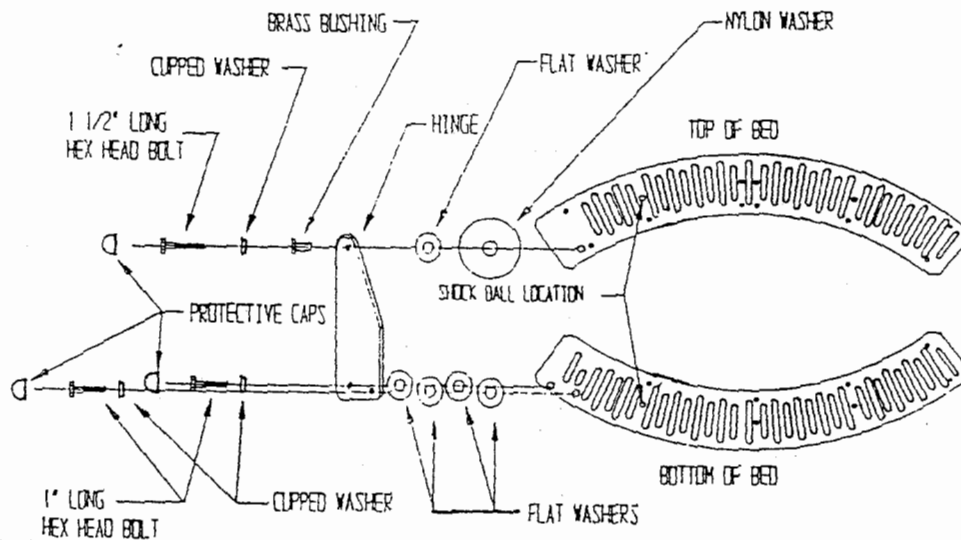
The Pivot Hinge Plates are to be attached first to each end of the bottom unit. Study the illustration below carefully.

Place two Flat Washers between the bottom of the bed and Pivot Hinge Plate for each Hex Head Bolt. Place a cupped washer on each 1" Hex Head Bolt and attach each pivot hinge plate to the bottom of the unit with two 1" Hex Head Bolts. Check for proper alignment and carefully tighten the Hex Head Bolts, and place the protective plastic caps over the exposed Hex Head.

5. Protect the acrylic of the bed and provide a safety support for the Tanning Unit Canopy. This can be done with two 36" pieces of carpet covered wood or plastic milk crates or similar boxes. Cover all surfaces that will contact the acrylic with carpet or soft cloth. These boxes or pieces of wood must be able to support the weight of the Canopy.

6. With at least one strong person on each end of the Canopy, place the Canopy on the bed. The Canopy should be supported by the boxes, and held in place by the strong people. The hole for the Pivot Hinge Plate should be at the back side of the unit to line up above the installed Pivot Hinge Plate on the bed bottom. See the Illustration below.

7. With the Canopy supported on the boxes and held by two people, place a Nylon Washer next to the Canopy and then a Flat Washer, both between the Pivot Hinge Plate and the Canopy. Push the Brass Bushing through the Pivot Hinge Plate and the two Washers. Put a Cupped Washer on the 1 1/2" Hex Head Bolt and insert the Hex Head Bolt through the Bushing, Pivot Hinge Plate, Washers and into the Canopy. Turn the Hex Head Bolt but do not yet fully tighten. Repeat this operation on the other end so that both ends of the Canopy are attached to the Pivot Hinge Plates. Check alignment and attachment of both Pivot Hinge Plates and Pivot Bolts, and then fully tighten the bolts before allowing the full weight of the Canopy onto the boxes. **Do not yet remove the boxes supporting the Canopy.**



HINGE ASSEMBLY &  
SHOCK BALL LOCATION

APRILLO / MEGASUN

## Assembly Instructions (continued)

### 8. Attachment of Gas Filled Support Cylinders.

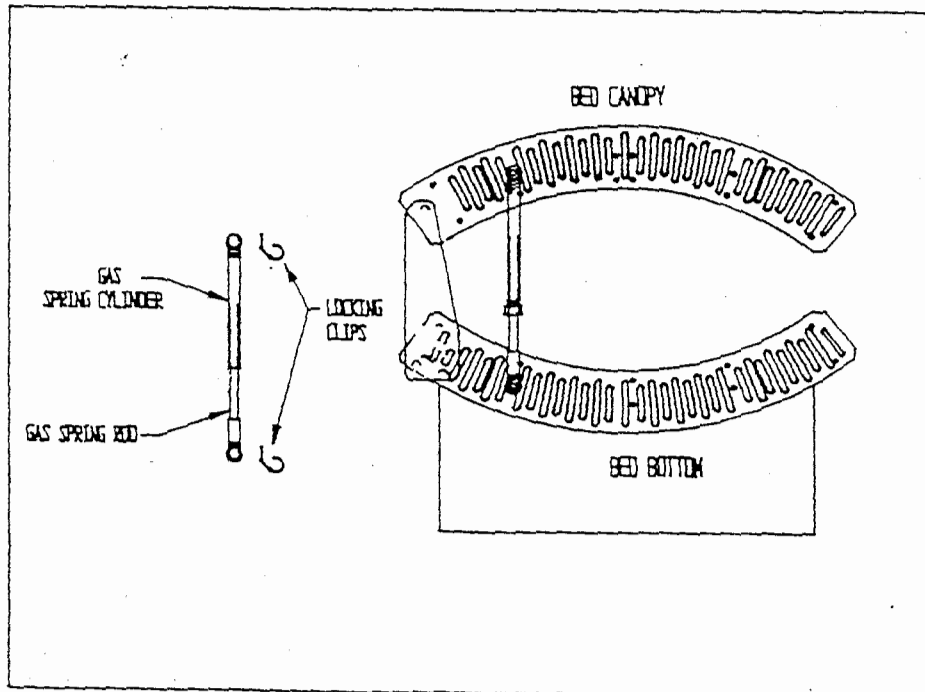
The Gas Filled Support Cylinders are to be attached first to the ball joints on each end of the bottom unit. The Gas Filled Support Cylinders are properly installed with the thicker Cylinder end up. Study the illustration below carefully.

Note that the Gas Filled Support Cylinders are filled with Nitrogen Gas under high pressure. They should not be tampered with, or subjected to excessive heat or tension. They are not adjustable, and like all Gas Filled Support Cylinders, they will lose gas over time. They must be considered replaceable items, and should be replaced when they lose efficiency in supporting the weight of the Canopy. Make it a regular practice to check all bolts, wire locking clips and the smooth operation of the Pivot Hinge and Gas Filled Support Cylinders on your Tanning Unit.

Install the lower ball joint end of the Gas Filled Support Cylinder onto the ball located on the Tanning Unit bottom. Protect the finish of the ball joint and tap gently using a rubber mallet to seat the ball joint onto the ball. Raise the Canopy on its Pivot Hinge so the upper ball joint can be aligned with the ball on the Canopy and place the joint onto the ball. Gently tap the protected upper ball joint using a rubber mallet. Repeat this operation on the other side. With both Gas Filled Support Cylinders installed and operating properly you must insert the wire locking clips through the safety holes in the ball joints.

Insert the wire locking clips and turn each clip so that it locks around the shaft of the ball joint. This is an important safety step.

Inspect all Hex head Bolts, and Wire Locking Clips, and put plastic protective covers on any exposed Hex Heads. The Canopy should lift and lower smoothly and stop when no force is being applied.



## Electrical Connections

### MegaSun SL units without drawer.

Plug the connector from the Canopy into the receptacle in the bed bottom, and turn the connector counterclockwise until secure.

### MegaSun SL units with drawer and all MegaMax units.

After the Canopy has been attached to the bed, run the three black power cables into the drawer and secure to the back plate with cable hold tight unit. The three power cables terminate in modular connectors with 8 and 12, and 22 wire ends. Match each modular connector with its mate from the drawer, and connect. After all three modular connectors are connected, tighten the security screws to prevent the modular connectors from disassembling.

The timer connection is made using a 16-4 wire cable from the timer to the bed. The black insulated wire is 110 volt power feed from the bed to the timer. The red insulated wire is the return line from the timer to the bed. The white insulated wire is neutral, and the green insulated wire is to ground. Match the colors and make a proper connection according to applicable codes.

All MegaSun beds are 220 volt, and are equipped with a 10-4 SO cable on SL models and 6-4 SO cable on MegaMax models. Acceptable variation in voltage is 218-230 volts.

Black =	110 volt power feed*
Red =	110 volt power feed
White =	Neutral
Green =	Ground

Be certain that the mains power supply is disconnected before making connections to the main supply.

All electrical connections should be made only by a qualified electrician or electrical contractor in accordance with all applicable electrical codes.

\*Attach the higher voltage leg to the Black power feed. The unit is designed for this configuration only, and this instruction must be followed to avoid damage to the relay coil.

Inspect all connections and then test your unit. When mains power is connected, the unit should turn on and off from the "on-off" switch located on the canopy within reach of the bed user. When the "on-off" switch is "on", the bed should only be energized when the timer is also "On".

If you need any assistance, or wish to order lamps or replacement parts, call MegaSun at 314-652-7432.

## Relamping Instructions for Tube Lamps

1. Disconnect Power to Unit.
2. Fully open unit. Remove acrylic from unit. The acrylic is held in its track by four Phillips head screws. Remove the screws and push or pull the acrylic as far as possible towards the front or back of the bed using the palms of your hands. This will allow you to grasp the exposed edge of the acrylic and pull it out of its track from the bed.
3. Turn lamp in lamp holder until pins are exposed in holder to disengage lamp pins from holder. Remove lamp by gently pulling lamp up from holder.
4. Replace lamp by inserting end of lamp into lamp holders and turning lamps to close lamp holder and secure lamp. (approximately 2-3 clicks) Note that RUVA tubes need to be replaced with care to have the lamp etch and the light transmitting part of the glass facing out.
5. Clean acrylic sheet on both sides and replace by reversing the removal procedure. Note that the screws do not penetrate the acrylic, they merely limit the lateral movement of the acrylic in its track. You may find it easier to replace first the two screws against which the acrylic will rest when replacing the acrylic.
6. Reconnect power to the unit. Reorder lamps from MegaSun.

# MegaSun

Tanning Beds • Salon Supplies

## WARRANTY

Mega Sun, Inc. warrants each new MegaSun suntanning bed delivered to the original consumer to be free from defects in material and/or workmanship under intended normal usage, as described in the instruction manual accompanying this unit, for a period of one (1) year from the date of sale.

The MegaSun suntanning bed frame, constructed from metal parts, comes with a three (3) year warranty against any structural damage that may occur under normal usage, as outlined in the instruction manual accompanying each unit.

Mega Sun, Inc.'s obligation under this warranty is limited to the replacement and/or repair of any defective part to the original purchaser without charge. Any failure or defect of acrylic shields or tanning lamps must be reported within 10 days after the date of sale. This warranty is valid to the person or entity who registers the original warranty card with Mega Sun, Inc. within ten days after the date of sale. This warranty applies to replacement parts only and does not include shipping, labor or transportation costs. Lamps and acrylic shields are not covered under this warranty.

Only parts specified by Mega Sun, Inc. the original equipment manufacturer (O.E.M.), may be used in the replacement or repair of the tanning unit during the warranty period. Use of any unauthorized parts will void the warranty. Any alteration or modification to the product or labeling of the product, as well as misuse or abuse, neglect, improper installation, alteration or accident nullifies this warranty.

Mega Sun Inc. reserves the right to request return of apparently defective merchandise for inspection of said defect. Mega Sun, Inc. remains sole judge of whether the item will be covered under this warranty. If equipment must be returned to the factory, buyer will be responsible for freight and shipping charges. This warranty does not apply to damage that may occur while in transit by common carrier.

This warranty is in lieu of any other warranties expressed or implied. This warranty does not guarantee merchantability or fitness for a particular purpose.

