

# ***ProSun***<sup>®</sup>

by ProSun Tanning Industries, LLC.

3000 Series

2800 Series

2600 Series

&

2400 Series

20 minute **User's Manual**

## CONTENTS

Contents.....	1
Warning Label.....	2
Lamp Compatability Chart.....	3-4
Electrical Requirements.....	5
General Notes.....	6-7
Beauty and the responsible tanner.....	8-9
Tanning Sensitivity (with allergen table).....	10
Care and Maintenance.....	11-12
Preventive Maintenance.....	12-14
Replacement of Components.....	15
Troubleshooting Guide.....	16
Warranty.....	17
Installation, Setup, and Remote Control.....	Attached

## WARNING LABEL

- **NEVER OPERATE THIS MACHINE WHEN THE AMBIENT ROOM AIR TEMPERATURE IS GREATER THAN 90 DEGREES FAHRENHEIT.**
- **NEVER OPERATE THIS MACHINE IN A COMMERCIAL APPLICATION WHEN THE REMOTE TIMER IS NOT WORKING PROPERLY.**
- **NEVER OPERATE THIS MACHINE WHEN THE BLUE FILTER GLASS IN ANY FACIAL TANNER IS NOT INSTALLED OR IS BROKEN / DEFECTIVE**
- **NEVER OPERATE THIS MACHINE WHEN IT IS NOT VENTILATING ITSELF PROPERLY (TOO HOT INSIDE)**
- **THE SALON OWNER OR OPERATOR MAY NEVER, UNDER ANY CIRCUMSTANCES, OPEN THE BENCH OR CANOPY OF PROSUN UNITS WITHOUT THE SUPERVISION OF AN AUTHORIZED SERVICE PERSON**

### ⚠ WARNING

- Read the instruction booklet before using this product
- When using a folding combination machine with a canopy and bench, lie down on the bench and pull the canopy down as far as it will go
- When using a canopy only, lie down and pull the canopy down to a point no closer to the body than the minimum allowed usage distance 4 inches or 10 centimeters
- Operation of this device closer to the body than the recommended minimum distance for use may result in overexposure
- Recommended eyewear: provided eye shields (Intrexco nr. 5635/1s) or equivalent eyewear as defined under 21CFR1040.20,2(b)(6)
- Two pair of protective eyewear are furnished with this equipment and should be worn by all persons in the room when lamps are on
- Disconnect power before attempting to clean, relamp or engage in the maintenance of this product

**CAUTION**   
DISCONNECT UNIT BEFORE SERVICING

### ⚠ DANGER

- Ultraviolet radiation
- Follow instructions
- Avoid overexposure
- **WEAR PROTECTIVE EYEWEAR** - Failure to do so may result in severe burns or long term injury to the eyes
- As with natural sunlight, overexposure can cause eye and skin injury and allergic reactions
- Repeated exposure may cause premature aging of the skin and skin cancer
- Medications or cosmetics may increase your sensitivity to the ultraviolet radiation
- Consult your physician before using sun lamps, if you are using medication or have a history of skin problems or believe yourself to be especially sensitive to sunlight
- If you do not tan in the sun, you are unlikely to tan from the use of this product
- Minimum use distance is 4 inches or 10 centimeters
- Tanning may appear after one application, provided that your skin is capable of developing a suntan
- Allow a minimum of 48 hours between exposures
- To reach maximum session times, follow the recommended exposure schedule
- To maintain your tan, it is recommended that you tan no more frequently than twice a week and do not exceed maximum exposure times

**CAUTION**  
 Eye Protection Required

RECOMMENDED TANNING SCHEDULE		SKIN TYPE		MAXIMUM EXPOSURE TIME IN MINUTES			
				Week 1	Week 2	Week 3	Maximum
I	Sensitive Skin	Burns easily & severely Does not tan		Tanning Not Advised			
II	Light Skin	Burns easily & severely Tans minimally		3	6	11	20
III	Normal Skin	Burns moderately Tans moderately		5	9	15	20
IV	Dark Skin	Burns minimally Tans well / above average		7	12	18	20

**CAUTION:** Please refer to your individual bed for the recommended tanning schedule and proper exposure times for the model that you have purchased.

**The following lamps (or compatible) have been certified for use with this equipment:**

**CANOPY:**  
 ProTech Professional UVA 100 Watt  
 ProTech Professional FT UVA 100 Watt  
 ProTech Professional UVA 80 Watt  
 ProTech Intensive Dual FT RUVA 110 Watt  
 ProTech Intensive RUVA 80 Watt  
 ProTech Intensive RUVA 100 Watt

**BENCH:**  
 ProTech Professional UVA 100 Watt  
 ProTech Intensive RUVA 100 Watt

**FACIALS:**  
 ProTech Facial HPA 400 Watt  
 ProTech SoftPower UVA 25Watt

This product is in conformity with performance standards for sun lamp products under 21 CFR PART 1040.20

# ProTech

Manufactured For

## ProSun Tanning Industries

St. Petersburg, FL 33713

Phone: 727-825-0400

**THE FOLLOWING INSTRUCTIONS ARE IN COMPLIANCE WITH 'POLICY ON LAMP COMPATIBILITY'  
, 21 CFR 1040.20(e)(2)(iii)**

<b>Lamp Type:</b>	<b>Equivalent to:</b>
ProTech <i>Professional</i> Dual FT UVA 100Watt	Dual Sun F71/100Watt
ProTech <i>Professional</i> Dual AT UVA 100Watt	Dual Sun XL F71/100Watt
ProTech <i>Professional</i> UVA 80Watt	Midday Sun F59/80Watt
ProTech <i>Professional</i> UVA 100Watt	Midday Sun F71/100Watt
ProTech <i>Intensive</i> Dual FT R-UVA 100Watt	Dual Sun FR71/100Watt
ProTech <i>Intensive</i> Dual AT R-UVA 100Watt	Dual Sun XL FR71/100Watt
ProTech <i>Intensive</i> R-UVA 80Watt	Midday Sun FR59/80Watt
ProTech <i>Intensive</i> R-UVA 100Watt	Midday Sun FR71/100Watt
ProTech <i>Intensive</i> FT R-UVA 110Watt	Dual Sun FR71/100Watt
ProTech <i>High Intensive</i> R-UVA 160Watt	Signature Series VH0R 160Watt
ProTech <i>Intensive</i> R-UVA 100watt	Signature Series H0R 100Watt (VLR)
ProTech <i>Intensive</i> XL R-UVA 120Watt	Lighttech 120Watt XL R-UVA
ProTech <i>Intensive</i> Dual XL R-UVA 120Watt	Lighttech Dual 120Watt XLc R-UVA
ProTech <i>High Intensive</i> Dual XL R-UVA 180Watt	Lighttech Dual 180Watt XLc R-UVA
ProTech <i>SoftPower</i> UVA 25Watt	Spaghetti 25Watt (F25T5/25w)
ProTech <i>SoftPower</i> R-UVA 25Watt	Spaghetti 25Watt (FR25T5/25w)
ProTech <i>Facial</i> HPA 400Watt	Philips HPA 400/30s
ProTech <i>Proformance</i> UVA 100Watt	Philips Performance UVA 100Watt
ProTech <i>Twist High Intensive</i> Dual XL R-UVA 180Watt	Signature Series Twist Dual 180Watt

**DANGER** - Ultraviolet radiation. Follow instructions. Avoid overexposure. As with natural sunlight, overexposure can cause eye and skin injury and allergic reactions. Repeated exposure may cause premature aging of the skin and skin cancer.

**WEAR PROTECTIVE EYEWEAR; FAILURE TO MAY  
RESULT IN SEVERE BURNS OR LONG-TERM INJURY TO THE EYES.**

Medications or cosmetics may increase your sensitivity to the ultraviolet radiation Consult physician before using sunlamp if you are using medications or have a history of skin problems or believe yourself especially sensitive to sunlight.

If you do not tan in the sun, you are unlikely to tan from use of this product.

Sunlamp - **DANGER** - Ultraviolet radiation. Follow instructions. Use **ONLY** in fixture equipped with a timer. **ALWAYS FOLLOW INSTRUCTIONS ACCOMPANYING THE SUNLAMP PRODUCT TO AVOID AND MINIMIZE POTENTIAL INJURY! ALWAYS WEAR PROTECTIVE EYEWEAR!**

**PURCHASER SHOULD RETAIN THIS FORM FOR FUTURE REFERENCE AND LAMP COMPATIBILITY INFORMATION**

# LAMP COMPATIBILITY CHART

## COSMEDICO

Updated: October 18, 1996

### Cosmedico Light, Inc.

#### DANGER – ULTRAVIOLET RADIATION

Cosmedico Light, Inc. Replacement Lamps in compliance with  
Federal Standard 21 CFR 1040.20

(Fully documented and submitted as to substantial equivalency)

COSMEDICO Lamp			as REPLACEMENT for		
Lamp Type	Lamp Code	Part No.	Manufacturer	Lamp Type	Lamp Code
CosmoStar Longlife	NA1-12-100W	12503 OR	Wolff System	Crystal Sun S	DA1-763-100W
CosmoStar S	NA1-12-100W	12501/12500	Wolff System	Diamond Sun S	DSS71-T12-100W
(Name change only, from CosmoStar S to CosmoStar Longlife. Effective April 1996.)			Wolff System	Crystal Sun S	DA1-763-80W
CosmoStar S	NA1-12-80W	12481	Wolff System	Diamond Sun S	DSS59-T12-80W
Goldarium S plus	F73-T12/RDC	11304	Wolff System	Bellarium Plus	SA2-10-100W (73" RDC)
			Wolff System	Bellarium S	SA2-10-100W (73" RDC)
			COSMEDICO	Goldarium S	SA1-12-100W (11303)
					F73/T12/RDC
Goldaruim S	SA1-12-100W	(11302)	Wolff System	Bellaruim S	SA1-10-100W (73" RDC)
	F73/T12/RDC				F73/T12/HO/100W/RDC
Goldaruim S	SA1-12-100W	11301	Wolff System	Bellaruim S	SA1-71-100W (F71 BP)
Goldaruim S	SA1-12-80W	11280	Wolff System	Bellaruim S	SA1-59-80W (F59 BP)
Goldaruim S VHO	F73" RDC RS 160W	16188	Wolff System	Bellaruim VHO	VH1-10-160W (73" RDC)
Hi-Tan	F71 100W BP	10198	COSMEDICO	Hi-Tan	F71 100W BP (10190)
By Cosmedico					
Hi-Tan	F71 100W BP	10190	Sunbronze	8.5 Ultralamp	F71T12/100W/BP
By Cosmedico					
Hi-Tan S	AS2-12-100W	10196	Wolff System	Bellarium S	SA1-10-100W (73" RDC)
By Cosmedico					F73/T12/HO/100W/RDC
			Wolff System	Nuvalarium	N2-10-100W (73" RDC)
Cosmolux AS	A1-12-100W (72" RDC)	10164	Wolff System	Crystal Sun S	DA1-765-100W (RDC)
			Sun Industries	Sun Lite 72" RDC	F72/S1350/SM/85/100W
Cosmolux AS	A1-12-100W	10166	Wolff System	Crystal Sun S	DA1-762-100W
			Wolff System	Diamond Sun	DS71-T12-100W
			Interlectric	S-10 100W	Preheat/Bipin
Cosmolux AS	A1-12-80W	10148 (10097)	Wolff System	Crystal Sun S	DA1-762-80W
			Wolff System	Diamond Sun	DSS59-T12-80W
Cosmolux S	CA1-12-100W	12304	Wolff System	Accelerator	ACC71-T12-100W (F71BP)
		W/RDC Adaptor	Wolff System	Bellarium S	SA1-10-100W (73" RDC)
Cosmolux RA plus	A1-14-100W	15500 (15138)	Wolff System	Crystal Sun R	DA1-760-100W
			Philips	Cleo R-UVA	100W
Cosmolux RA plus	A1-14-80W	15508 (15088)	Wolff System	Crystal Sun R	DA1-760-80W
			Philips	Cleo R-UVA	80W
Cosmolux UVA plus	A1-11-100W	10200 (10128)	Wolff Systems	Crystal Sun L	DA1-760-100W
			Philips	Cleo UVA	100W
Cosmolux UVA plus	A1-11-80W	10290 (10078)	Wolff Systems	Crystal Sun L	DA1-760-80W
			Philips	Cleo UVA	80W
Cosmolux UVA	A1-11-100W	10101	Philips	Cleo UVA	100W
Cosmolux V110	CA1-12-160W	16161	Wolff System	Bellarium V110	V111-10-160W

CosmoLux, CosmoStar, Goldaruim, and Hi-Tan are registered trademarks of Cosmedico Light, Inc. Cleo is a registered trademark of Philips. Crystal Sun S, Crystal Sun L, Crystal Sun R, Bellarium S, Bellarium Plus, and Bellarium VHO are registered trademarks of Wolff System Technology Corp. Diamond Sun and Diamond Sun S are registered trademarks of ETS, Inc. 8.5 Ultralamp is a registered trademark of Sunbronze. Sun Lite is trademark of Fun Industries.

**Dr. P. Boclonck**

**Cosmetic Light, Inc. – 65 Baystate Drive – Braintree, FMA 02184 – 617-356-1703 – FAX 617-356-1599**

## ELECTRICAL REQUIREMENTS

### IMPORTANT NOTICE

Please read carefully the following information.

The electrical requirements for your new tanning bed:

Model of Tanning Bed	Circuit breaker Required (Volts / Amps)	Hertz	Continuous Operating Amps
3090	220V / 30	60	25
3002	220V / 30	60	25
3000	220V / 30	60	22
2870 XL	220V / 30	60	24
2801 XL	220V / 50	60	24
2800 Dual	220V / 30	60	23
2800 Select	220V / 30	60	23
2601	220V / 30	60	23
2650	220V / 30	60	18
2401	220V / 30	60	18
2400 Dual	220V / 30	60	18

Operating any 220 Volt combination at voltage levels below 210 or above 230 constitutes an automatic nullification of the warranty, as it could cause damage to the unit's system.

Please insure that your electrician and/or installer reads this users manual carefully prior to the installation of your tanning bed.

**Always disconnect the unit from its power supply when servicing or repairing the unit.**

## GENERAL NOTES

- *EVERY EFFORT HAS BEEN MADE TO ASSURE THAT THE EQUIPMENT OUTLINED REFLECTS THE ACTUAL EQUIPMENT EXPECTED TO BE INSTALLED. THE EQUIPMENT IS POSITIONED IN SUCH A MANNER AS TO PROVIDE OPTIMUM OPERATION. THE CUSTOMER SHALL BEAR THE SOLE RESPONSIBILITY FOR COMPLIANCE WITH ALL APPLICABLE CODES; OSHA; NEMA; LOCAL AND NATIONAL STANDARDS.*
- *EQUIPMENT WARRANTIES, EXPRESSED OR IMPLIED ON THE PART OF PROSUN®, ITS DEALERS, DISTRIBUTORS OR OTHER DESIGNATED AGENTS, SHALL BE CONTINGENT UPON STRICT COMPLIANCE WITH ELECTRICAL, STRUCTURAL AND MECHANICAL RECOMMENDATIONS CONTAINED IN THIS MANUAL UNLESS SPECIFIED OTHERWISE IN THE EQUIPMENT SALES ORDER.*
- *THE CUSTOMER IS RESPONSIBLE FOR ALL ROOM PREPARATION, COSTS, FEES, PERMITS AND INSPECTIONS UNLESS SPECIFIED OTHERWISE IN THE GENERAL ORDER FOR EQUIPMENT PURCHASED.*
- *ProSun®, ITS DEALERS, DISTRIBUTORS OR OTHER DESIGNATED AGENTS SHALL SUPPLY ALL INTERCONNECTING CABLES REQUIRED FOR THE EQUIPMENT. TO INCLUDE; EQUIPMENT INSTALLATION AND SETUP. ANY ADDITIONAL POWER, GROUNDING OR ANCILLARY EQUIPMENT SHALL BE THE RESPONSIBILITY OF THE CUSTOMER UNLESS SPECIFIED OTHERWISE IN THE EQUIPMENT SALES ORDER.*
- *EQUIPMENT INSTALLATION CANNOT BEGIN UNTIL THE ROOM IS COMPLETE AND READY FOR EQUIPMENT INSTALLATION. TO INCLUDE; CONTRACTORS EQUIPMENT, ELECTRICAL REQUIREMENTS AND ROOM CONSTRUCTION.*
- *ProSun®, ITS DEALERS, DISTRIBUTORS OR OTHER DESIGNATED AGENTS SHALL RESERVE THE RIGHT TO REFUSE TO INSTALL ANY EQUIPMENT INTO ANY ROOM WHICH HAS NOT BEEN PROPERLY PREPARED IN ACCORDANCE WITH THESE GENERAL NOTES.*

## GENERAL ELECTRICAL NOTES

- *ALL ELECTRICAL WORK SHALL COMFORM TO THE REQUIREMENTS OF THE NATIONAL ELECTRICAL CODE, O.S.H.A. OR APPLICABLE LOCAL AND OR STATE ORDINANCES, AS WELL AS UTILITY COMPANY RULES REGARDING AMPERE INTERRUPTION AND SAFETY SHUNT TRIP SWITCHES AND POWER PANELS OF WHICH SHALL BEAR THE LABEL OF UNDERWRITER'S LABORATORIES, INCORPORATED AND SHALL BE PERMANENTLY MARKED FOR EASY IDENTIFICATION.*
- *ALL WIRES SHALL BE SINGLE SOLID RUNS WITHOUT SPLICES MEETING THE N.E.M.A. STANDARDS*
- *THE ELECTRICAL CONTRACTOR SHALL PROVIDE AND INSTALL ALL ELECTRICAL MATERIAL AS SPECIFIED FOR A SAFE OPERATING SYSTEM.*
- *THE ELECTRICAL CONTRACTOR SHALL RING OUT AND TAG AND TERMINATE ALL WIRES AT BOTH ENDS, WITH EACH RUN TO BE INSPECTED TO ENSURE THAT NO WIRES HAVE BEEN GROUNDED OR OPEN.*
- *THE CUSTOMER SHALL PROVIDE A DEDICATED POWER SOURCE WHEN CALLED FOR BY PROSUN, ITS DEALERS, DISTRIBUTORS OR OTHER DESIGNATED AGENTS.*
- ***ProSun®**, ITS DEALERS, DISTRIBUTORS OR OTHER DESIGNATED AGENTS ARE NOT RESPONSIBLE FOR THE FINAL INSTALLATION OF THE ELECTRICAL SYSTEM. THE RECOMMENDED ELECTRICAL PLAN MUST BE COORDINATED BETWEEN THE CUSTOMER AND THE ELECTRICAL CONTRACTOR. ANY DEVIATION TO THE ELECTRICAL PLAN BEFORE, DURING AND AFTER EQUIPMENT INSTALLATION IS THE RESPONSIBILITY OF THE CUSTOMER.*
- *THE ELECTRICAL CONTRACTOR SHALL ENSURE THE COMPLETION OF ALL ELECTRICAL REQUIREMENTS PRIOR TO THE INSTALLATION OF ANY **ProSun®** SYSTEM.*



## **BEAUTY AND THE RESPONSIBLE TANNER**

Many people in today's image-conscious society want to be tanned. The Romans built large sunning terraces onto their villas so as to take advantage of the sun's spiritually and physically therapeutic effects. They somehow inherently knew of the positive influences that natural sunlight could lend to the human condition, millennia before the science of photobiology was conceived of.

Researchers in this field have concluded that there are indeed a number of good things that can be had by regulated exposure to filtered sunlight, not the least of which being the production of vitamin D, a major contributing substance in the fight against many different types of skin disorders. All of the body's basic functions are enhanced by a strengthened immune system, which occurs directly as a result of moderate dosages of the right types of ultraviolet light absorbed under controlled conditions.

The negative effects resultant of too much natural sunlight, however, is known to many of us in the forms of sunburn, premature aging and wrinkling of the skin, and finally, skin cancer. Avoiding these notorious hazards at all costs, as well as knowing how your individual skin type reacts to ultraviolet light, are the primary keys to successfully and responsibly achieving the tan you have always wanted.

Start by asking the question, "just what is a tan?"

### **UV (ULTRAVIOLET) RAYS**

Light is measured and analyzed by reading the variations in frequency of a wavelength (like radio waves) on an oscilloscope. Ultraviolet light isn't visible to the unassisted human eye, and must therefore be measured by special sensing devices, i.e. a UVA-meter. The three types of UV are UVA, UVB and UVC.

UVA has a higher frequency of wavelength than UVB or UVC, and is the ray which is thought to promote the excretion of pigment from the hormone called "Melanin", which occurs naturally in the skin.

UVB is believed to be the catalyst, or kick-starter for the Melanin to begin producing pigment. It is also the ray which causes sunburn and wrinkling, so the skin can withstand only brief dosages at very small percentage levels to UVA.

UVC, present in natural sunlight, is mostly filtered out by the ozone layer in the upper atmosphere, and is extremely harmful to human skin, at any level of exposure.

In sunbeds, only small percentages of UVB to UVA are used to effect tanning - example: 95% UVA-to-5% UVB - whereby the individual tanner will be placed on an acceptable exposure schedule according to his or her skin type. There is no UVC emitted by tanning lamps.

## THE TANNING PROCESS

The sunbed you have purchased is designed to concentrate optimal levels of UVA, in conjunction with very low percentages of UVB, on the outermost layers of the skin, so as to stimulate the production of Melanic pigment, which is slightly pink in its dormant state, and cause it to turn brown after excretion. The more Melanin cells present in the skin determines the amount of pigment that will be excreted and distributed, and therefore the extent of the tan.

### A COMPREHENSIVE GUIDE TO RESPONSIBLE TANNING:

1. Depending upon skin type, tanning “treatments, each consisting of 10 to 12 individual sessions, taken over a period of 20 to 24 days, should be embarked upon. No more than 2 of these treatments per week should be undertaken, for more in-depth details for tanning see the schedule label on bed.
2. Allow at least 24 hours to pass between each tanning session.
3. If you are taking any kind of medication, or are wearing facial cosmetics, make sure to first consult your doctor before tanning. Certain ingredients in pharmaceutical products and make-up could induce UV light sensitivity and cause allergic reactions. A table describing a number of known allergens can be seen later in this manual.
4. For best facial tanning results, make sure to clean the face of cosmetics thoroughly at least three hours before each session. Better still, if possible, try not to wear any make-up during the day of the session.
5. Don’t use tanning lotions, oils or gels which contain SPF (sun protection factor), as these could hinder the desired tanning effect. Use only those that are specifically manufactured for use in sunbeds.
6. If your skin develops or displays any sort of undesired reaction such as a rash, acne, or unusual dryness, stop tanning immediately. If the problem doesn’t clear itself up within a couple of days, consult your doctor.
7. Always avoid sunburn. If you overexpose yourself you could erythemize (sunburn) the skin. Should this occur, stop tanning until the reddish color fully subsides, then recalculate your exposure schedule before continuing the treatment.
8. Read the WARNING label situated in full view of the user on the outside of the sunbed carefully before beginning a tanning session.
9. Never use “tanning accelerator” pills in conjunction with your tanning treatment, as these could lead to an increase of skin sensitivity to sunburn.

# TANNING SENSITIVITY

## MEDICATION LIST

Perfumes and colognes containing furocoumarins,  
Compounds from natural products such as plants and fruits.  
Their natural oils can sensitize the skin to sunlight.

Food and fruits that contain photosensitizing agents: celery, carrots, lime, coriander, parsley, fennel, dill, buttercup, mustard and figs.  
A partial list of known photosensitizing medications is listed below by name:

ACETOHEXAMIDE (DYMELOR)	ACRIDINE PREPARATIONS (SLIGHT)	AGAVE LECHUGUILLA (AMARYLLIS)
AGRIMONY	9-AMINOACRIDINE	AMINOIBENZOIC ACID
AMITRIPTYLINE (ELAVIL, ETC.)	ANESTHETICA (PROCAINE GROUP)	ANGELICA
ANTHRACENE	ANTIMALARIALS	ARSENICALS
BARBITURATES	BAVACHI (CORYLIFOLIA)	BENIZONE
BENZOPYRINE	BIRGAMOT (PERFUME)	BITHIONAL (ACTAMER, LOROTHIDOL)
BLANKOPHORES (SULFA DERIVATIVES)	BULOSIMIDE (JADIT)	BROMCHLORSALICYLANILIDE
4-BUTYL-4-CHLOROSALICYLANILIDE	CARBAMAZEPINE (TEGRETOL)	CARBINOXAMINE D-FORM (TWISTON R-A)
CARBUTAMIDE (NADISAN)	CARROTS, WILD	CEDAR OIL
CELLERY	CHLOROPHYLL	CHLOROTHIAZIDE (DIURIL)
CILORPROMAZINE (TIORAZINE)	CILORTETRACYCLINE (AUREOMYCIN)	CITRON OIL
CITRUS FRUITS	CLOVER	COAL TAR
CONTRACEPTIVES, ORAL	DEMECLOCYCLINE	DECILOMYCIN
DIMETHYLCILORTETACYCLINE	DESIPRAMINE (NORPRAMIN, PERTOFRANE)	DIBENZOPYRAN DERIVATES
DICYANINE-A	DIETHYLSTIBESTROL	DIGALLOYL TRIOLEATE SUNSCREEN
DILL	DIPHENHYDRAMINE HYDROCHLORIDE	EOSIN (SLIGHT)
ESTRONE	FENNEL	FLOURESCEN DYES
5-FLUOROURACIL	GLYCERYL P-AMINO BENZOATE	GOLD SALTS
GRASS (MEADOW)	GRISOFULVIN (FULVICIN)	HEMATOPORPHYRIN
HEXACILOPROPIENE (RARE)	HEXACILOTHIAZIDE (ESIDRIX)	IMIPRAMINE HCL (TOFRANIL)
ISOTIIPENCYL (THERUHSIN)	ISOTIIPENDYL	LADY'S THUMB (TEA)
LANTININ	LAVENDER OIL	LIME OIL
MECLOTHIAZIDE (ENDURON)	MEPAZINE (PACATAL)	9-MERCAPTOPURINE
METHOTRIMEPRAZINE (LEVOPROME)	METHIOXSALEN (MELONYNE, OXSORALEN)	5-METHIOXYPSORALEN
8-METHIOXYPSORALEN	MONOGLYCHRAL PARA-AMINO BENZOATE	MUSTARDS
NALIDIXIC ACID	NAPHTHALENE	NORTRIPTYLINE (AVENTYL)
OXYTETRACYCLINE (TERRAMICIN)	PARA-DIMETHYLAMINO AZOBENZENE	PARAPIHENYLENEDIAMINE
PARSLEY	PARSNIPS	PENICILLIN DERIVATIVES
PERIOLINE	PERPHENAZINE (TRILAFON)	PENANTHRENE
PIENAZINE DYES	PIENOLIC COMPOUNDS	PHENOTHIAZINES (DYES, METHYLENE BLUE)
PIENOXAZINES	PHENYL BUTAZONE (BUTAZOLIDIN)	PHENYTOIN (DILANTIN)
PITCH AND PITCH FUMES	PORPHYRINS	PROCHLORPERAZINE
PROMAZINE HYDROCHLORIDE	PROPRITYLINE	PSORALENS
PYRATHIAZINE HYDROCHLORIDE	PYRIDINE	QUINETHAZONE (HYDROMOX)
QUININE	ROSE BENGAL PERFUME	RUE
SALICYLANILIDES	SALICYLATES	SANDALWOOD OIL (PERFUME)
SILVER SALTS	SMARTWEE (TEA)	STILBAMIDINE ISETHIONATE
SULFACETAMIDE	SULFADIAZINE	SULFADIMETHOXINE
SULFAGUANIDINE	SULFANILAMIDE (SLIGHT)	SULFAMERAZINE
SULFAMETHANIZINE	SULFAPYRIDINE	SULFATHIAZOLE
SULFONAMIDES	SULFASOMIDINE (B.KOSIN)	SULFONYLUREAS (ANTIDIABETICS)
THIACHLORSALICYLANILIDE	TRIACACYLINES	THIAZIDES (DIURIL, HYDRODIURIL)
THIOPHENE	THIOPROPAZATE DIHYDROCHLORIDE	TOLBUTAMIDE (ORINASE)
TOLUENE	TRIBROMOSALICYLANILIDE (TBS)	TRICLOFORMETHIAZIDE (METHIAHYDRIN)
TRIDIONE	TRIETHYLENE MELAMINE (TEM)	TRIFLUPROMAZINE HYDROCHLORIDE (VESPRIN)
TRIMEPAZINE TARTRATE (TEMARIL)	TRIMETHADIONE (TRIDIONE)	TRIPYRATHIAZINE
TRYPTALAVINE	TRYPTAN BLUE	VANILLIN OILS
WATER ASH	XYLENE	YARROW

## A FEW QUESTIONS THAT ARE FREQUENTLY ASKED:

**Question** - How far away from the tanning lamps should the body be positioned?

**Answer** - To within 10 to 15 centimeters (4 to 6 inches)

**Question** - Does indoor tanning provide protection against sunburn outdoors?

**Answer** - No, indoor tanning is cosmetic only. Use lotions with high SPF outdoors

**Question** - Should a woman tan indoors during pregnancy?

**Answer** - Always consult your doctor before tanning during pregnancy.

Important note: Not everyone has the same skin type or tanning propensity. This needs to be taken into serious consideration when calculating a proper exposure schedule.

## CARE AND MAINTENANCE

The Care and Maintenance in this section covers most of the difficulties that you may encounter under normal working circumstances. If your tanning bed fails to operate properly, please review the following steps before calling for service.

THE TANNING BED YOU PURCHASED CONTAINS VOLTAGES WHICH ARE POTENTIALLY HAZARDOUS. ALL REPAIRS AND GENERAL MAINTENANCE SHOULD BE PERFORMED BY QUALIFIED SERVICE PERSONNEL.

### FOR YOUR TANNING BED:

Safe and continuous operation of your tanning bed depends partially on the care taken by users. Please observe the following precautions when tanning bed is in use.

- Do not disassemble any part of the bed while in use.
- Do not allow sharp objects in the bed while in use.
- Do not allow liquid or any foreign objects to get inside the bed.
- Ensure the beds back side is at least 6 – 12 inches away from the wall.
- Avoid from having the acrylic sheets come in contact with sharp edges and objects
- The room or cabin in which the unit is operated must be well ventilated.
- Make sure that the unit never comes in contact with water while connected to power.
- Do not turn the machine on and off frequently within the space of 3 minutes.
- When replacing or cleaning Facial Lamps, both facial lenses and bulbs should be cleaned with alcohol, being free of smudges and finger prints

## CARE AND MAINTENANCE

### Cleaning the machine

Always disconnect the main power from the unit before attempting to clean or repair it. Dust the lamps with a dry cloth - do not use cleaning fluid or alcohol. The acrylics should be taken out at least once every week of operation and cleaned thoroughly with a **non-alcoholic** disinfectant glass or surface cleaner. If alcohol is used, the acrylic may fade, crack, or break altogether. Failure to use anything other than an approved cleaning material on the acrylic will result in poor UV-transmission, and could eventually cause injury to the person using the machine. Use a vacuum cleaner with a dust nozzle to clean around the ballast racks and throughout the interior portions of the base, top deck, and bench.

### Longevity of the acrylic sheets

The acrylic sheets used in this machine should be changed between 1200 and 1500 hours of operation. If not, UV-transmission could be greatly reduced.

**ProSun®** recommends the use of Lucasol or Solacryl when cleaning acrylic sheets

### Longevity of the lamps

Most lamps will display up to 120% of rated output during the first 50 hours of illumination. As such, exposure schedules should be reduced by 20%, or sunburning may occur. After the initial 50 hours, the lamps will run at 100% of their rated output and gradually go down from there, until about 800 hours, whereupon the lamps should be replaced.

- **IMPORTANT:** *When replacing or cleaning Facial Lamps, both facial lenses and bulbs should be cleaned with alcohol, being free of smudges and finger prints*

Please note:

**ProSun®** recommends changing blue filter glass after every 1000 hours of use to maintain peak performance and safety of your tanning equipment.

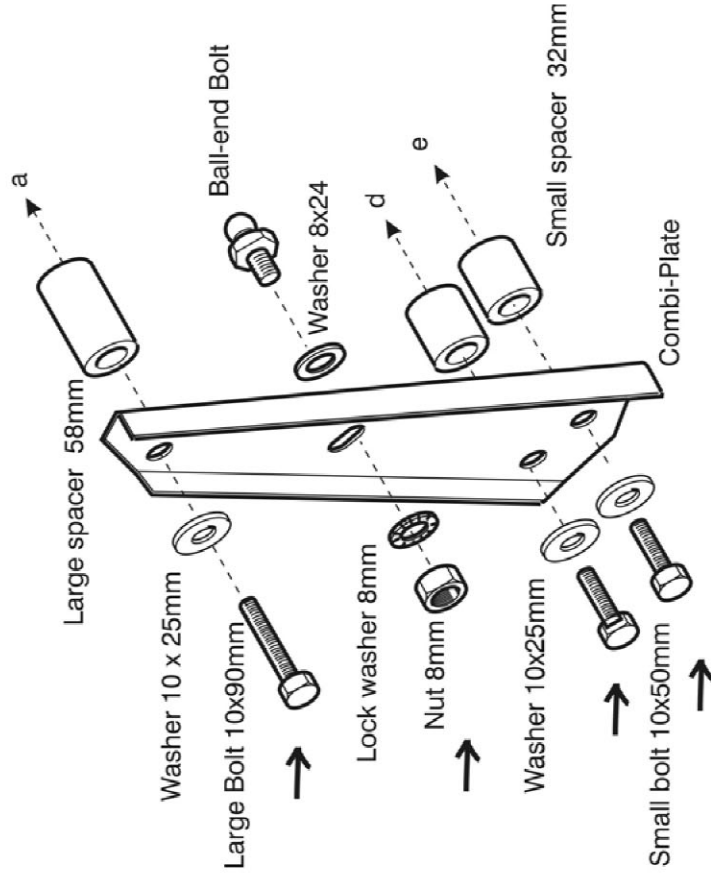
## WARNING DANGER

**NEVER** use this unit if the blue filter glass is missing, cracked or otherwise damaged. **SEVERE INJURY** may result within seconds. We recommend changing blue filter glass after 1,000 hours of use.

### What to do with old lamps?

Contact your local garbage disposal company or city authority to find out what is the most environmentally sound manner of throwing away old fluorescent lamps.

## Check combi-set bolts for proper tightness on a weekly basis.



### White Combi set

### Off-White Combi set

**Caution:** There should be no visible wear to the bolts or bolt holes nor any excess play that would allow the canopy to move other than as intended.

## PREVENTIVE MAINTENANCE SCHEDULE

Frequency	Clean Acrylic Top & Bottom	Clean Pillow	Inspect Facial Glass If applicable	Clean & Sanitize Goggles	Ensure Click Strips is firmly in place	Clean and Sanitize Bed Exterior	Remove & Clean the inside both Acrylic sheets	Dust Lamps	Wipe and Vacuum fans & vents	Clean all Reflectors	Wipe and Vacuum out Vent Hoses	Inspect Acrylic for cracks wear	Replace Top and Bottom Acrylic	Adjust shock tension (if needed)	Check combi set bolts for proper tightness	Inspect Vent Hoses for Optimum Vent-illation
After Each Session	*	*	*	*	*											
Daily	*	*		*		*						•				
Weekly	*	*					*	*	*		*			•	•	
Monthly	*	*								*						•
Every 1200 hrs. Of use													•			

\* Please Refer to the Lamp Manufacturer Specifications for Lamp and Facial Lamp Replacement and Frequency.

When replacing Facial Lamps ensure that any fingerprints on the lamp itself are wiped clean using the cleaning pad provided with replacement lamps or alcohol.  
**PROSUN®** recommends the use of Lucasol or Solacryl when cleaning acrylic sheets

\* Certified by: International Smart Tan Network.

For information about becoming a certified member, call or write to: International Smart Tan Network, 3101 Page Avenue, Jackson, MI 49203, (517) 784-1772

*The acrylic sheets used in this machine should be changed between 1200 and 1500 hours of operation. If not, UV-transmission could be greatly reduced.*

**PROSUN®** recommends the use of Lucasol or Solacryl when cleaning acrylic sheets

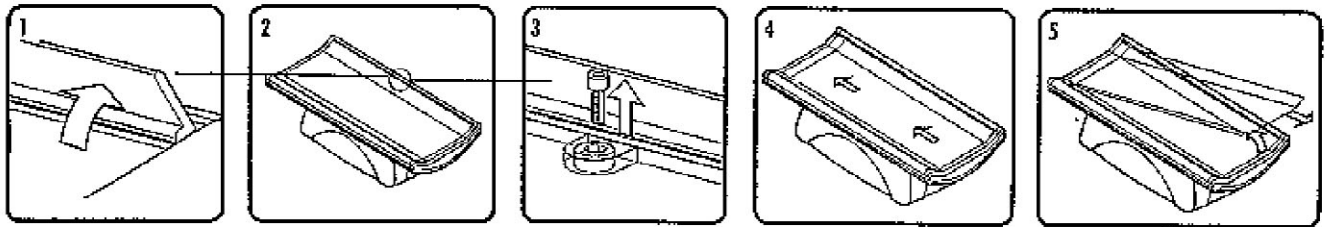
## REPLACEMENT OF COMPONENTS

**WARNING:** Before doing any repair or replacement work on this machine, **ALWAYS** disconnect the power (or, if the main power cable has a wall plug, pull it out) at the main circuit breaker.

### Removal of the bench acrylic:

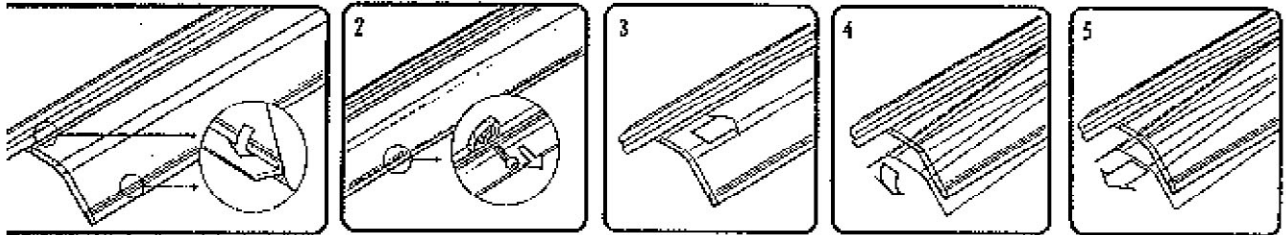
- Turn the plastic click strips on either side of the canopy downwards
- Remove the securing screw.
- Pull the acrylic sheet down and out of the canopy.
- Lower the acrylic sheet a little.
- Pull it out of the canopy.

Replace the acrylic sheet in the bench in the reverse manner.



### Removal of the canopy acrylic:

- Same as the bench acrylic.



### Lamp replacement:

Holding the lamp with both hands, turn it until the bi-pins can slide easily out of the lamp holder socket, and slowly take it out of the unit. Clicks will be heard as the socket incrementally rotates. Replace the lamp in just the opposite manner, making sure that the labeling on the lamp itself is pointed outward. **SEE WARNING LABEL FOR LAMP TYPES.**

### Starter replacement:

Grasp and turn the starter to the left, one half turn until it comes easily out of the socket. Replace the starter in the opposite manner.

**IMPORTANT:** ONLY USE MANUFACTURER - AUTHORIZED REPLACEMENT COMPONENTS. FAILURE TO DO SO MAY VOID WARRANTY.



## TROUBLE SHOOTING GUIDE

PROBLEM	PROBABLE CAUSE	POSSIBLE SOLUTION
Unit is activated but nothing happens	<ul style="list-style-type: none"> <li>No Power</li> <li>Timer clears after priming</li> <li>Remote timers do not work</li> </ul>	<ul style="list-style-type: none"> <li>Check to see if the power source has been properly connected</li> <li>Restart the timer and try again</li> <li>Check connections to both – replace if defective</li> </ul>
Bed appears too be to hot	<ul style="list-style-type: none"> <li>Fans are obstructed</li> </ul>	<ul style="list-style-type: none"> <li>Ensure all fans are clear of obstructions and dust.</li> </ul>
Room Temperature abnormally warm.	<ul style="list-style-type: none"> <li>Bed is too close to the wall</li> </ul>	<ul style="list-style-type: none"> <li>Pull the bed away from the wall at least 6 – 12 inches.</li> </ul>
Individual lamps do not light	<ul style="list-style-type: none"> <li>Lamp not properly in socket</li> <li>Lamp is defective</li> <li>Starter is defective</li> <li>Ballast defective</li> <li>Loose wire</li> </ul>	<ul style="list-style-type: none"> <li>Turn lamp in socket until lamp illuminates</li> <li>Replace lamp</li> <li>Replace starter</li> <li>Replace ballast</li> <li>Reconnect wire</li> </ul>
Facial tanner does not light	<ul style="list-style-type: none"> <li>Face tanner switch is turned to “Off” position</li> <li>Lamp is defective</li> <li>Switching from “On” to “Off” and back again too quickly</li> </ul>	<ul style="list-style-type: none"> <li>Turn face tanner switch to “On” position</li> <li>Replace lamp</li> <li>Wait a few minutes after switching facials back “On” again (approximately 3 minute cool down time)</li> </ul>

**ProSun Tanning Industries, LLC. ®**  
**LIMITED WARRANTY**  
**EFFECTIVE November 20th, 2001**

1. **Warranty Period:** PROSUN warrants new tanning equipment manufactured or imported by it, provided it is still owned and operated by the original purchaser, to be free from defects in material and workmanship under normal use and service, for a prorated period of two (2) years from the date of delivery to the original Purchaser
2. **Activation of Warranty:** To activate this Limited Warranty the original Warranty Registration card attached hereto must be completed by the Purchaser and the Selling Dealer at the time of delivery to the Purchaser, and returned to PROSUN within fifteen (15) days of delivery as a condition precedent to obtaining any coverage under this Limited Warranty. Further, warranty coverage for equipment intended for commercial use will not be considered active until the customer takes possession of the equipment. Equipment intended for residential use, where a Prosun authorized dealer sells equipment to a third party, will be considered active when the third party takes possession of the equipment or six months after the dealer takes possession of the equipment- whichever occurs first.
3. **What is covered:** During the warranty period as specified above PROSUN will replace any defective system or component, at PROSUN's sole discretion. Prior to making any repairs PROSUN will advise the Purchaser of the nature of the problem and the cost to the Purchaser based on the proration of the defective system or component.
4. **What is not covered:**
  - A) Acrylic sheets, starters (igniters), lamps, blue and clear filter glass.
  - B) Any plastic parts affected by discoloration.
  - C) Cracked or broken coverplates, endcaps and sidebars
  - D) Any failure to the external timing system (example: T-Max, FST timers and timer system components)
  - E) Any failure to the external voltage transformer (example: "buck and boost" transformers)
  - F) Any damage caused by the failure of any supporting hardware not supplied by PROSUN.
  - G) Any labor charges, travel time charges, or mileage charges associated with a warranty item.
  - H) Shipping costs back to PROSUN'S factory. PROSUN will pay for ground transportation of repaired or replaced part back to purchaser.
  - I) Tanning units, parts or components damaged in transit where PROSUN'S damaged goods policy is not followed by purchaser or purchaser's designee.

**This warranty does not apply to any failure of product due to alterations, modifications, misuse, abuse, neglect, accident, improper maintenance or installation, use of parts not supplied by PROSUN, failure to operate and use the product in accordance with the instructions provided in the Owner's Manual supplied with the product or failure to otherwise meet manufacturer's specifications, or if the serial number has been removed, altered or defaced.**

6. **Procedure for Requesting Warranty Work:** In the event of a problem covered under this limited warranty, the customer must first contact PROSUN and obtain a Returned Goods Authorization for products to be repaired or replaced at PROSUN's discretion, provided product(s) are returned freight prepaid to PROSUN. PROSUN will perform its obligation within thirty (30) days from the date of PROSUN's receipt of the Purchaser's authorization to effect repairs and acceptance of the cost of repairs based on the prorated values of the defective systems or components. Any payment due from the Purchaser shall be payable in full prior to PROSUN's return of the repaired system or component. Any product being returned to PROSUN for repair or replacement must be adequately packaged to prevent freight damage and shipped via traceable method
7. **Right to Modify:** PROSUN reserves the right to make changes or improvements in its products without incurring any obligations to similarly alter products which have been previously purchased.
8. **Exclusivity of Warranty:** This warranty is the only warranty made by PROSUN and may only be modified or amended by a written instrument signed by a duly authorized officer of PROSUN. PROSUN's sole and exclusive liability and Purchaser's sole and exclusive remedy under this warranty shall be, at PROSUN's option, to repair or replace, to the extent available on a prorated basis, any such defective Products. These remedies are available only if PROSUN's examination of such Products discloses to PROSUN's satisfaction that such defects actually exist and were not caused by Purchaser's misuse, abuse, neglect, improper installation, maintenance or testing, alterations or modifications, failure to meet manufacturer's specifications or any other cause beyond the range of normal usage, or by accident, fire or other hazard. Repair or replacement of a part does not extend the warranty period or extend the prorated value of a part or product beyond the initial two year limited warranty period from the date of delivery.

**THE WARRANTY SET FORTH ABOVE IS IN LIEU OF ALL OTHER WARRANTIES, EXPRESS OR IMPLIED, INCLUDING BUT NOT LIMITED TO ANY IMPLIED WARRANTY OF MERCHANTABILITY OR FITNESS FOR A PARTICULAR PURPOSE. IN NO EVENT SHALL PROSUN BE LIABLE FOR ANY INCIDENTAL OR CONSEQUENTIAL DAMAGES WITH RESPECT TO THE PRODUCTS DELIVERED HEREUNDER OR SUBSEQUENT USE THEREOF.**

9. **Limitation of Liability:** PROSUN shall not be liable for any loss, damages, or penalty resulting from failure to perform any of its obligations under this Agreement due to force majeure or any cause beyond its reasonable control.

**PROSUN'S LIABILITY UNDER OR FOR BREACH OF THIS AGREEMENT SHALL NOT EXCEED THE REFUND OF THE PURCHASE PRICE LESS REASONABLE RENTAL FOR PAST USE. IN NO EVENT SHALL PROSUN BE LIABLE FOR COSTS OF PROCUREMENT OF SUBSTITUTE GOODS BY THE PURCHASER OR FOR UNAUTHORIZED REPAIRS UNDERTAKEN BY THE PURCHASER WITHOUT PROSUN'S PREVIOUS WRITTEN APPROVAL. IN NO EVENT SHALL PROSUN BE LIABLE FOR ANY SPECIAL, CONSEQUENTIAL, OR INCIDENTAL DAMAGES, HOWEVER CAUSED, WHETHER FOR BREACH OF WARRANTY, NEGLIGENCE, OR OTHERWISE. PROSUN DISCLAIMS ANY OBLIGATION OR LIABILITY FOR LOSS OF USE OF THE PRODUCT WARRANTED, LOSS OF TIME, INCONVENIENCE, RENTAL OR SUBSTITUTE PRODUCTS, LOSS OF BUSINESS, LOSS OF INCOME, COMMERCIAL LOSS OR ANY OTHER DIRECT, CONSEQUENTIAL, SPECIAL OR INCIDENTAL DAMAGES.**

10. **Governing Law:** Notwithstanding principles of conflicts of law of any jurisdiction to the contrary, all terms and provisions of this Agreement are to be construed and governed by the laws of the state of Florida without regard to the laws of any other jurisdiction. The Purchaser waives any and all privileges and rights which they may have under Chapter 47, Florida Statutes (1993), relating to venue as it now exists or may hereafter be amended, and under any other statute, or administrative provision thereof in any legal action on this Agreement; and further, the Purchaser agrees that any legal action brought on this Agreement or in connection therewith, shall be brought in the appropriate court in Pinellas County, Florida.
11. **Attorney's Fees:** Should a dispute arise with regard to this warranty or any other aspect of this sale the prevailing party shall be entitled to reasonable attorneys fees and costs through appeal.